

Pretty face^{UP}

REPEAT

DOWN

COMP

STOP

YES NO

OUT

A

B

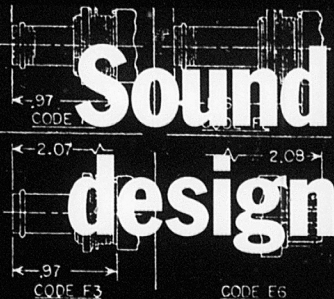
C

D

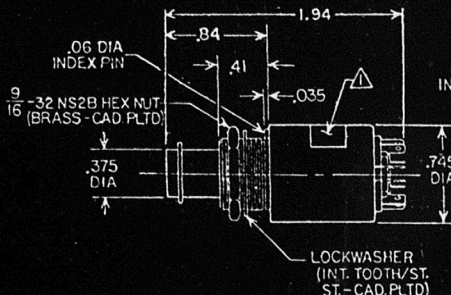
1

2

Sound design



RECOR.
PANEL



CODE	MODIFICATION DESCRIPTION
*D4	O-RING (ETHYLENE PROPYLENE) ON PLUNGER, EPOXY
*D5	SILICONE RUBBER BOOT, SEALED AT CASE NECK, BE EPOXY SEALED BASE.
E3	SWITCH CONTACTS AND TERMINALS GOLD PLATED FOR RESISTANCE APPLICATIONS AND GREATER SOLDERABILITY.
E4	PROVIDES LAMP CIRCUIT WITH MAKE & BREAK CONTACT OF SWITCH CONTACTS. LAMP GOES ON WHEN PL. PRESSED, GOES OFF WHEN PLUNGER IS RELEASED.
E5	ALL NORMALLY OPEN SWITCH CONTACTS CLOSE BEFORE CLOSED CONTACTS OPEN.
E6	PROVIDES SWITCHLIGHT TERMINALS THAT ACCEPT AN RECEPTACLES (0.016 TAB STYLE A).
F1	SINGLE LIGHT GANGSWITCH MOUNTING (MECHANICAL). PROVIDES PLUNGER LENGTHENED 0.125 IN.. PLUNGE SPANNER NUT FOR MOUNTING.
F2	MULTI-LIGHT GANGSWITCH MOUNTING (MECHANICAL). PROVIDES PLUNGER LENGTHENED 0.312 IN.. PLUNGE SPANNER NUT FOR MOUNTING.
F3	GANGSWITCH (NON-INTERLOCKED). PROVIDES PLUNGE 0.125 IN. AND SPANNER NUT FOR MOUNTING.
F4	SWITCHLIGHT FURNISHED WITH ROUND SPANNER NUT STANDARD HEX NUT.
G2	SWITCHLIGHT SUPPLIED WITH LOWER (16 OZ) OPERA

Just what you'd expect from CLARE.

Bright. Handsome. And functional.

Clare switchlights and gangswitches offer wide versatility to the front panel designer to meet most human engineering requirements. And behind the visual esthetics are the reliability, practical design and manufacturing skills that mean quality that is usually found only in custom switchlights. Just what you'd expect from Clare. Write

or call for complete details on the Pendar series switchlights and gangswitches. C. P. Clare & Company
3101 W. Pratt Avenue, Chicago, IL 60645. (312) 262-7700.

We help you compete

C. P. CLARE & COMPANY
GENERAL INSTRUMENT CORPORATION

